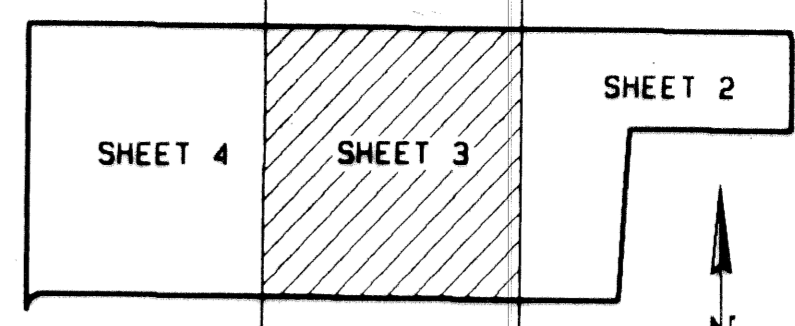


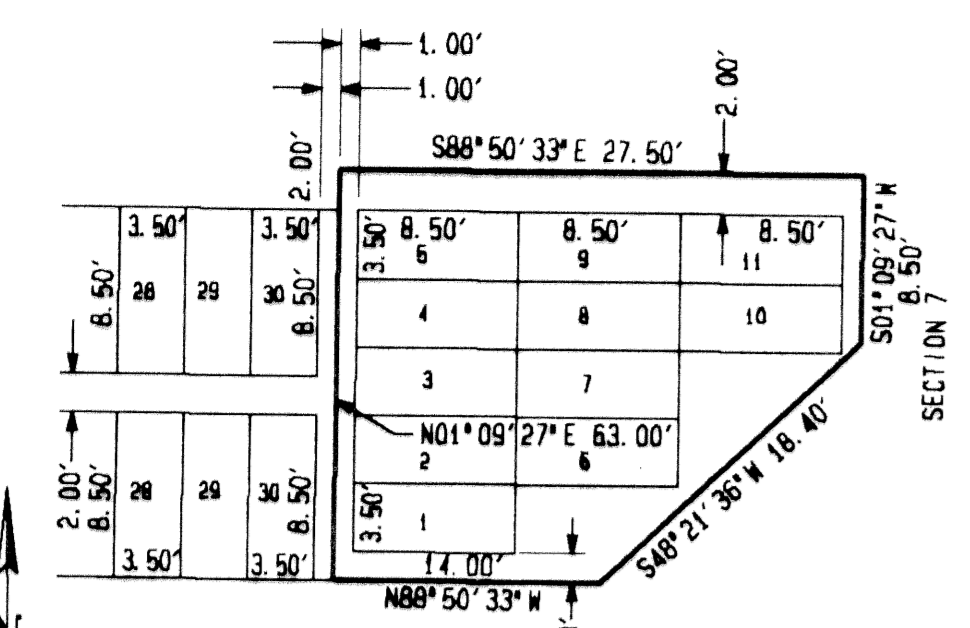
# ROYAL PALM MEMORIAL GARDENS PLAT FOUR

BEING A REPEAT OF A PORTION OF REPEAT OF PLAT NO. 1 GREENWOOD HILLS, AS RECORDED  
 IN PLAT BOOK 27, PAGE 134 OF THE PUBLIC RECORDS OF PALM BEACH COUNTY, FLORIDA  
 IN PART OF SECTION 4, TOWNSHIP 43 SOUTH, RANGE 43 EAST  
 CITY OF WEST PALM BEACH, PALM BEACH COUNTY, FLORIDA  
 FEBRUARY, 1994 SHEET 3 OF 5

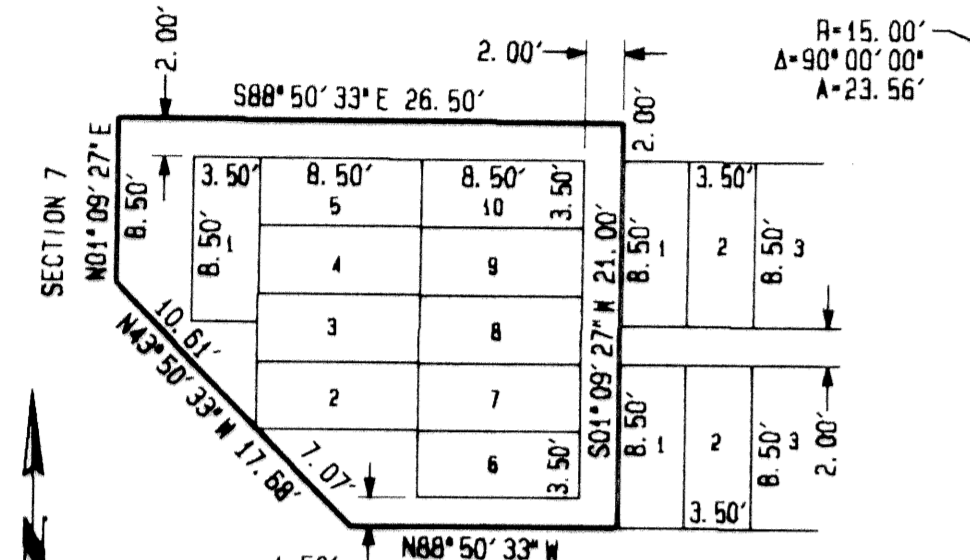
192



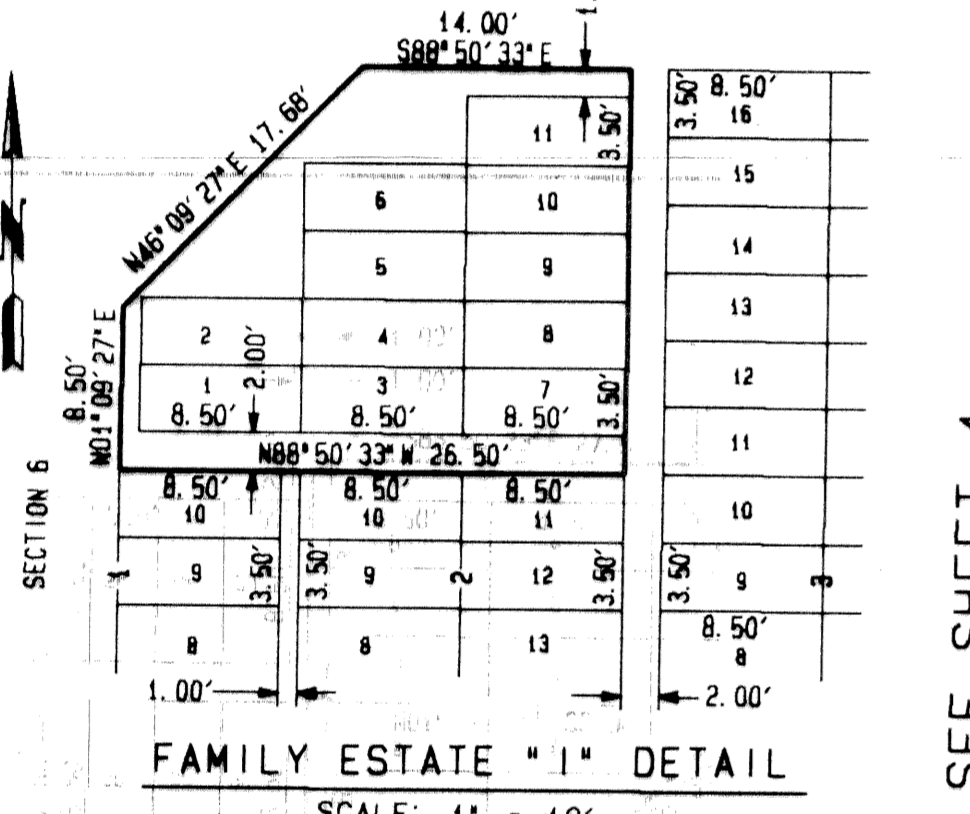
STATE OF FLORIDA  
 COUNTY OF PALM BEACH  
 This plat was filed for  
 record at \_\_\_\_\_ M. this \_\_\_\_\_ day  
 of \_\_\_\_\_ 1994, and duly  
 recorded in Plat Book No. \_\_\_\_\_  
 on Pages \_\_\_\_\_ thru \_\_\_\_\_  
 DOROTHY WILKEN  
 Clerk Circuit Court  
 By \_\_\_\_\_ D. C.



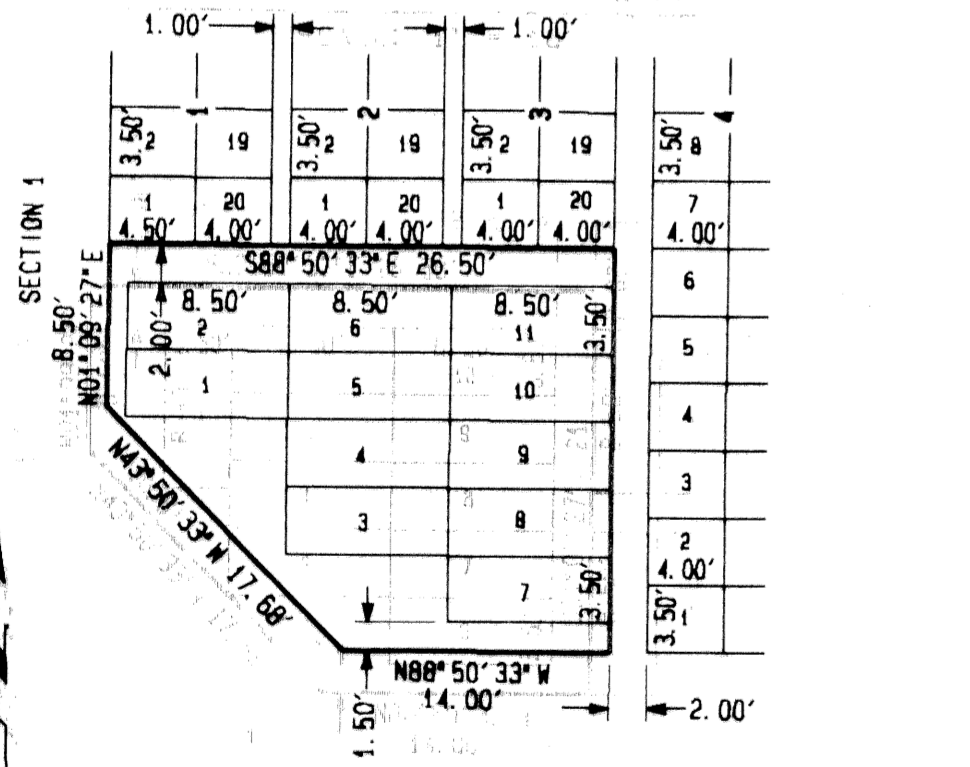
FAMILY ESTATE "G" DETAIL  
 SCALE: 1" = 10'



FAMILY ESTATE "H" DETAIL  
 SCALE: 1" = 10'

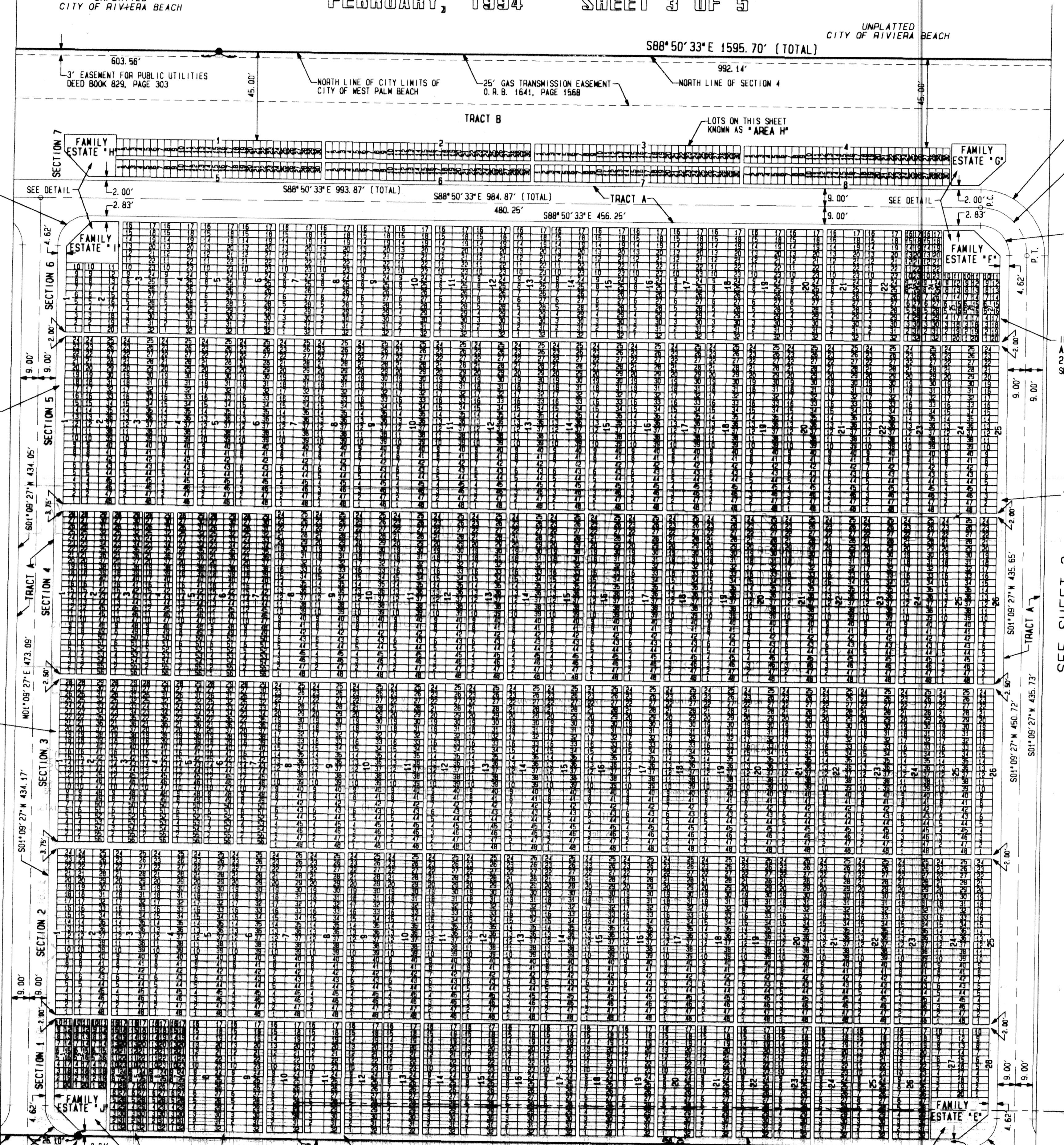


FAMILY ESTATE "I" DETAIL  
 SCALE: 1" = 10'



FAMILY ESTATE "J" DETAIL  
 SCALE: 1" = 10'

**LEGEND**  
 • Permanent Reference Monument (PLS #4609 except as noted)  
 ○ Permanent Control Point  
 R Radius  
 Δ Delta  
 A Arc Length  
 T Tangent Length  
 CH Chord Length  
 CHB Chord Bearing  
 P.C. Point of Curvature  
 P.T. Point of Tangency  
 P.B. Plat Book  
 O.R.B. Official Record Book



R=33.00'  
 Δ=90°00'00"  
 A=51.84'  
 R=24.00'  
 Δ=90°00'00"  
 A=37.70'  
 T=24.00'  
 CHB=S24°50'33"E  
 CH=33.94'

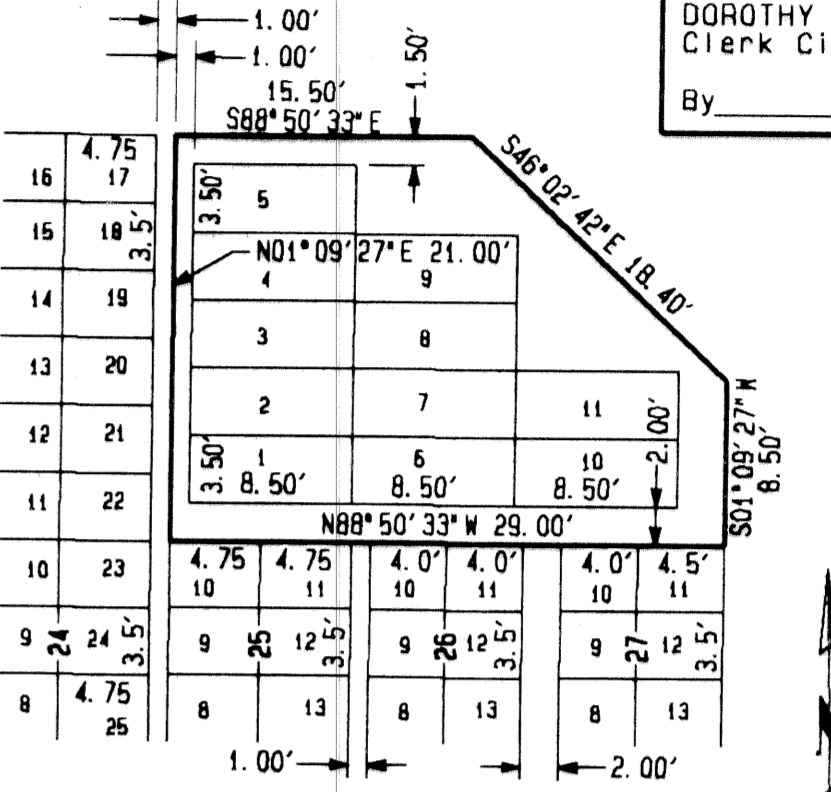
R=15.00'  
 Δ=90°00'00"  
 A=23.56'

INFANT BURIAL SITES  
 AREA H, SECTION 6, BLOCKS  
 23, 24, 25, 26 AND 27  
 SEE THIS SHEET FOR DETAIL

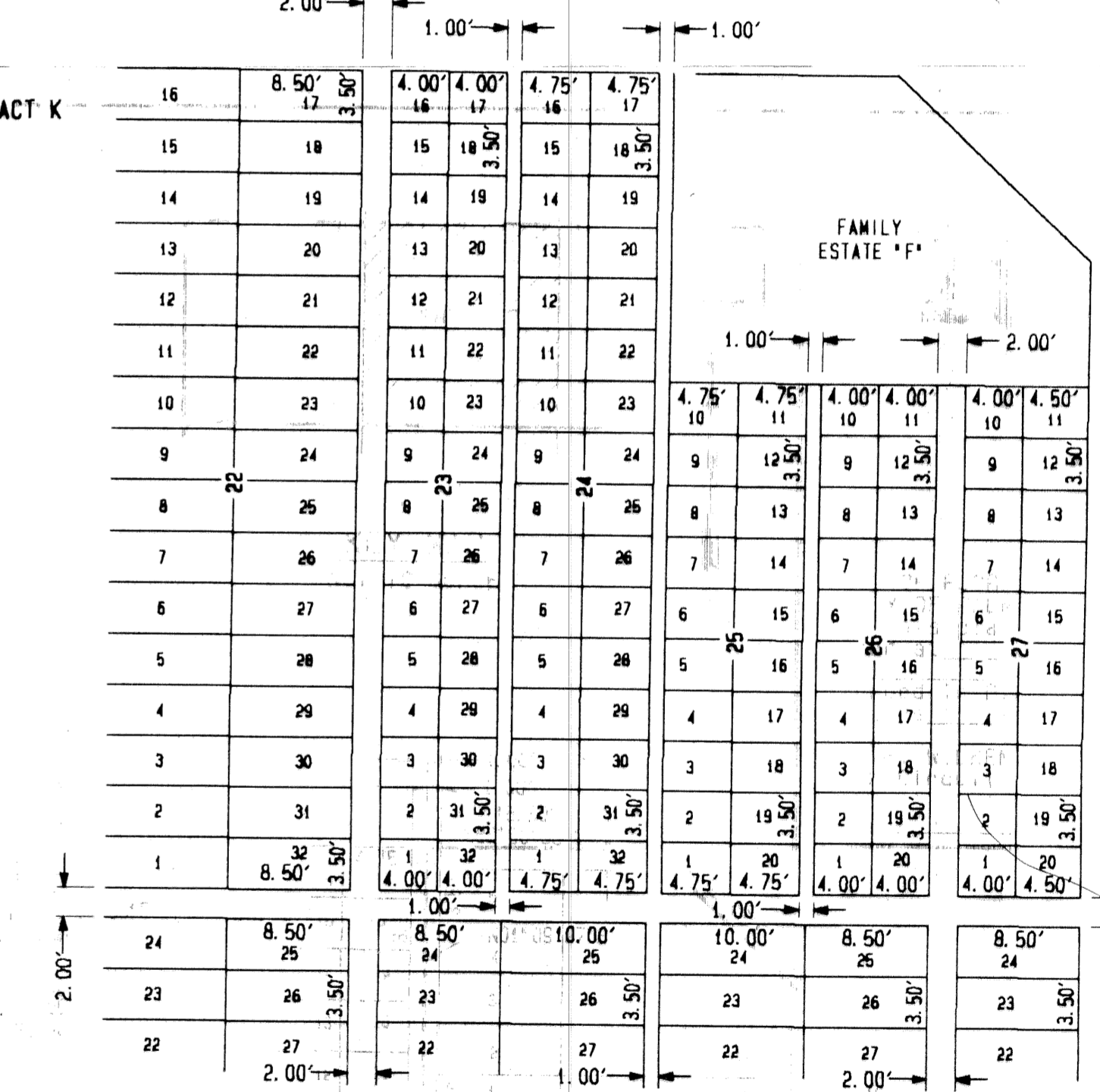
SEE SHEET 2

SEE SHEET 2

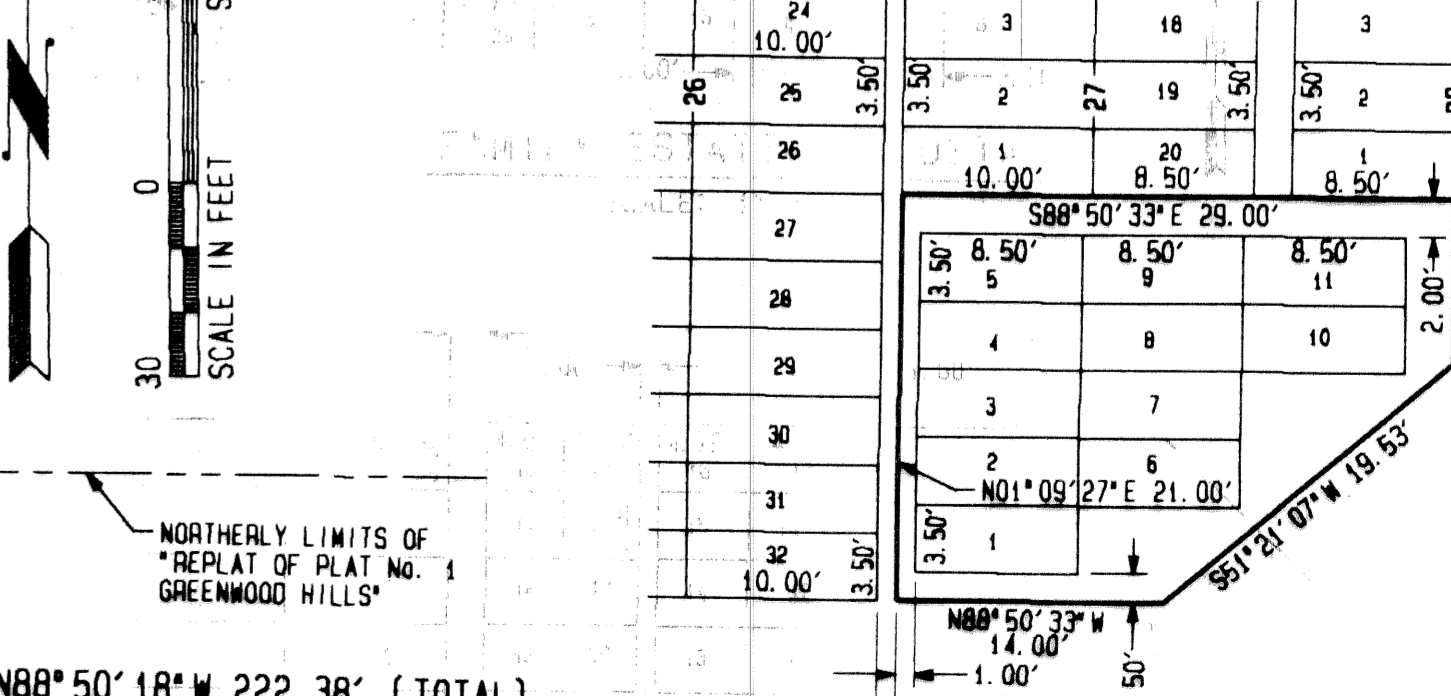
SEE SHEET 2



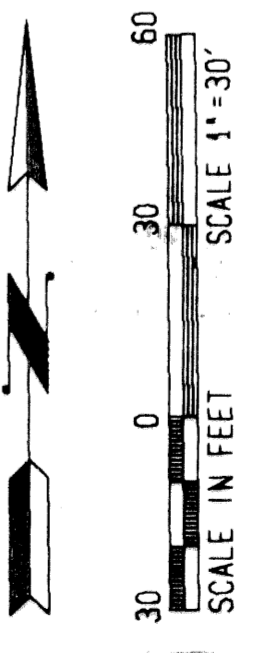
FAMILY ESTATE "F" DETAIL  
 SCALE: 1" = 10'



INFANT BURIAL SITES DETAIL  
 SCALE: 1" = 10'



FAMILY ESTATE "E" DETAIL  
 SCALE: 1" = 10'



COMPUTED D. BACHOR  
 DRAWN D. BACHOR  
 CHECKED \_\_\_\_\_  
 APPROVED \_\_\_\_\_  
 JOB NO. 92-397

ACCESSOR MAP 104  
 ROYAL PALM MEMORIAL GARDENS PLAT ONE  
 AND  
 REPEAT OF PLAT NO. 1 GREENWOOD HILLS  
 PLAT BOOK 27, PAGE 134